



Rock Shox Judy Cartridge Refresh Kit -1995-1997, p/n: CRTG1

To get maximum performance from your shocks, we recommend that you service your Rock Shox Judy Cartridge and install our Elastomer Refresh Kit.

Included in the kit:

- 2 Cartridge Seals
- 1 Piston O-Ring
- 1 Adjuster Rod O-Ring
- 1 Monofilament line
- 1 Shaft Guide Tool
- 1 Cartridge oil, 30mL
- 1 Neutral Shaft O-Ring
- 1 Packet of O-Ring Lube

Tools needed:

- Oil catch pan
- Rubber mallet
- 2mm and 3mm hex wrench
- Small screwdriver
- 16mm or 5/8 Deep socket

Disassembly- Figure 1

- Slide off shaft cover
- Use a rubber mallet to tap down on the shaft until lower seal is exposed
- Drain oil from inside cartridge
- Remove shaft from cartridge
- Remove upper seal by using a 2mm wrench pressed down through the access holes
- Use a screw driver to push the seal down and out of the cartridge body (do not scratch inside cartridge body)
- Remove the upper spacer (if present)
- If snap ring present, remove snap ring and top seal

Suspension Fork Parts

- Unscrew the adjuster rod from the shaft assembly, if present, may require a 2 or 3mm wrench
- *Note: Adjuster rod on DH model is non removable

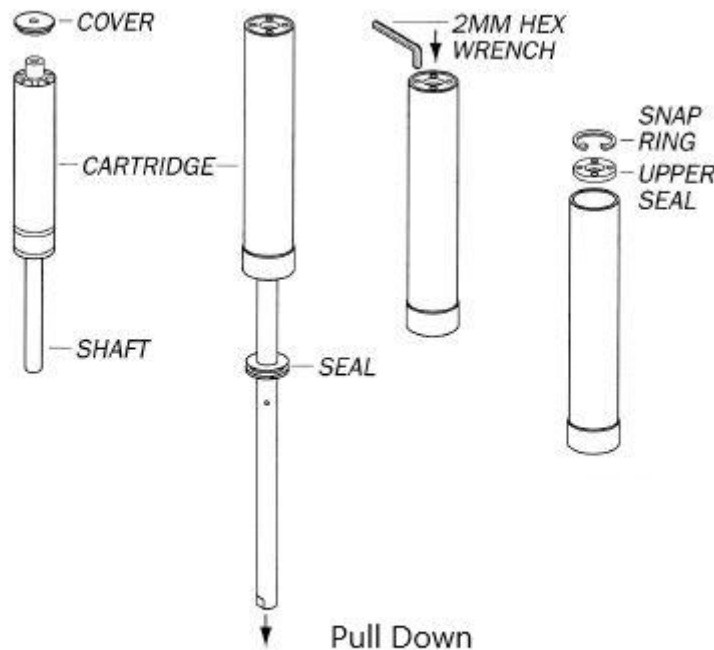


Figure 1

Cleaning

- Carefully clean the cartridge, shaft assembly and adjuster rod, if present
- Ensure all parts are clean and dry

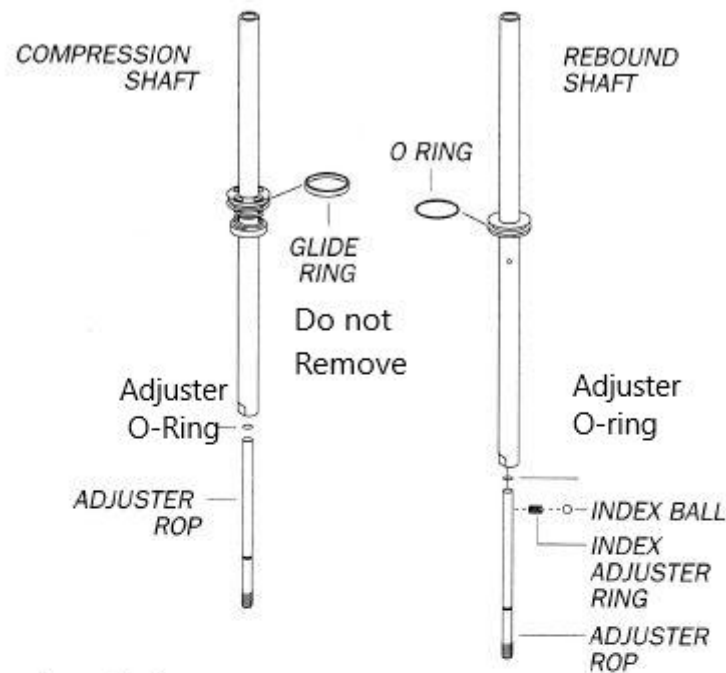
Assembly- Figure 2 and 3

- Reassemble shaft assembly without the adjuster rod
- Install new PISTON O-RING on Piston and lube with supplied grease, if applicable
- Most cartridges use a plastic guide ring on the piston, **DO NOT REMOVE this ring, as it is not necessary to replace.**
- Invert the cartridge body and lubricate the inside using the provided cartridge oil
- Place the spacer inside the cartridge body (if present)
- Lubricate the **CARTRIDGE SEAL** with cartridge oil, and be sure to that the shaft seal area is wet with oil



- Insert the upper **CARTRIDGE SEAL** into the cartridge body with closed side facing down and the inside of the seal (hollow side) is facing toward you
- You may use a deep 16mm or 5/8 socket on a extension to push and seat the **CARTRIDGE SEAL** inside the cartridge
- Lubricate the **SHAFT GUIDE TOOL** with cartridge Oil
- Insert and position the **SHAFT GUIDE TOOL** to cover up the **CARTRIDGE SEAL** hole then add cartridge oil until about ½ full
- Press in the non threaded end of the shaft assembly through the upper hole, which will push out the **SHAFT GUIDE TOOL**. Try to minimize oil loss
- Continue to press down on shaft until it stops
- Add more Cartridge Oil until about 2/3 full
- Cycle the shaft up and down until the air has been removed. Do not pull shaft out of the hole.
- Completely fill cartridge body with remaining Cartridge Oil, leave about 3mm of space from the top
- Install **TOP OUT O-RING** and seal washer on the shaft
- Thread the MONOFILAMENT LINE through the **CARTRIDGE SEAL** and slide onto shaft with hollow side of seal facing oil inside cartridge * Note: this step may only apply to 95 Judy XC
- Press **CARTRIDGE SEAL** on to body until it stops flush with end of cartridge body(95-95) or slightly below end of body (97 only)
- For cartridge with adjuster rods, install new **ADJUSTER ROD O-RING**
- Fill hollow shaft with oil, then thread in adjuster, spinning o-ring through the threads without damaging **Figure 4**
- Install new **Neutral Shaft O-Ring Figure 5** and lube with Elastomer Grease or a drop of cartridge oil

Suspension Fork Parts



Deep Socket
as Seal Installer

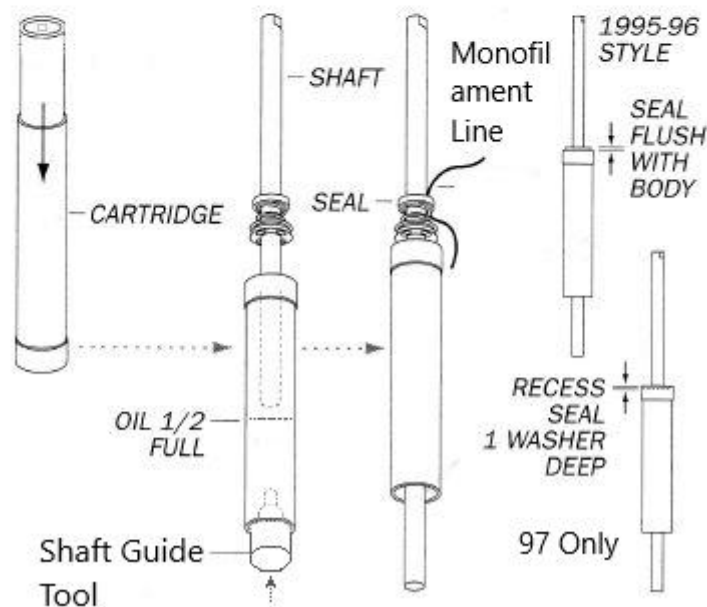
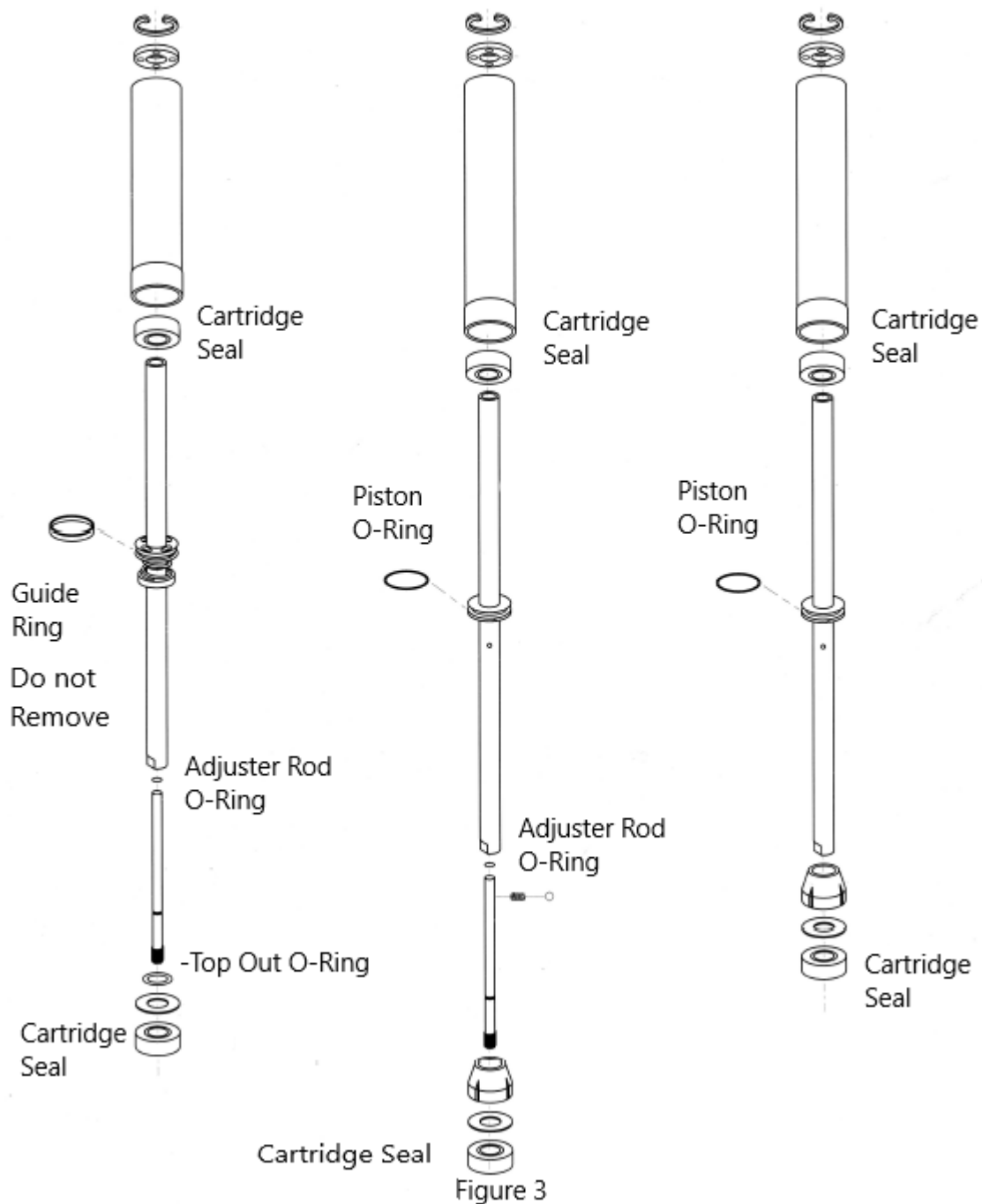


Figure 2



Suspension Fork Parts

96-97 Style Cartridge



Suspension Fork Parts

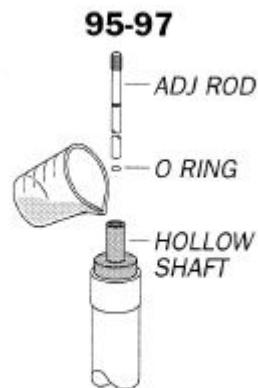


Figure 4

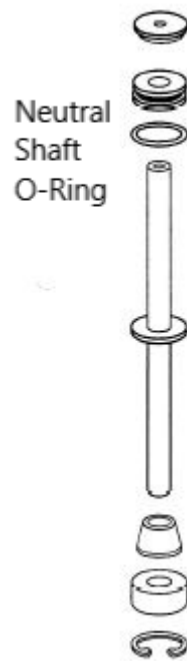


Figure 5